



# South Fork Wind Farm Fisheries Monitoring Surveys: Beam Trawl Survey

Captain Robert Fisheries, Inc.



## Introduction

- The CFRF is collaborating with URI & local fishermen to conduct pre-development monitoring surveys for the South Fork Wind Farm (SFWF) lease area using 4 different gear types
- The beam trawl survey targets bottom-dwelling species, such as scallops



## Methods

### General

- 1 trip/month on the F/V Mister G
- A 10 ft beam trawl with a 1-inch knotless nylon liner is used
- 3, 20-minute tows are conducted in each of 3 areas (Figure 1) for a total of 9 tows/month
- Salinity, temperature, & depth are recorded each tow



### Sampling

- Up to 30 individual fish, scallop, & crustaceans of each species are measured, & all are weighed
- Non-commercial invertebrates are weighed by species or group
- Rocks & boulders are counted

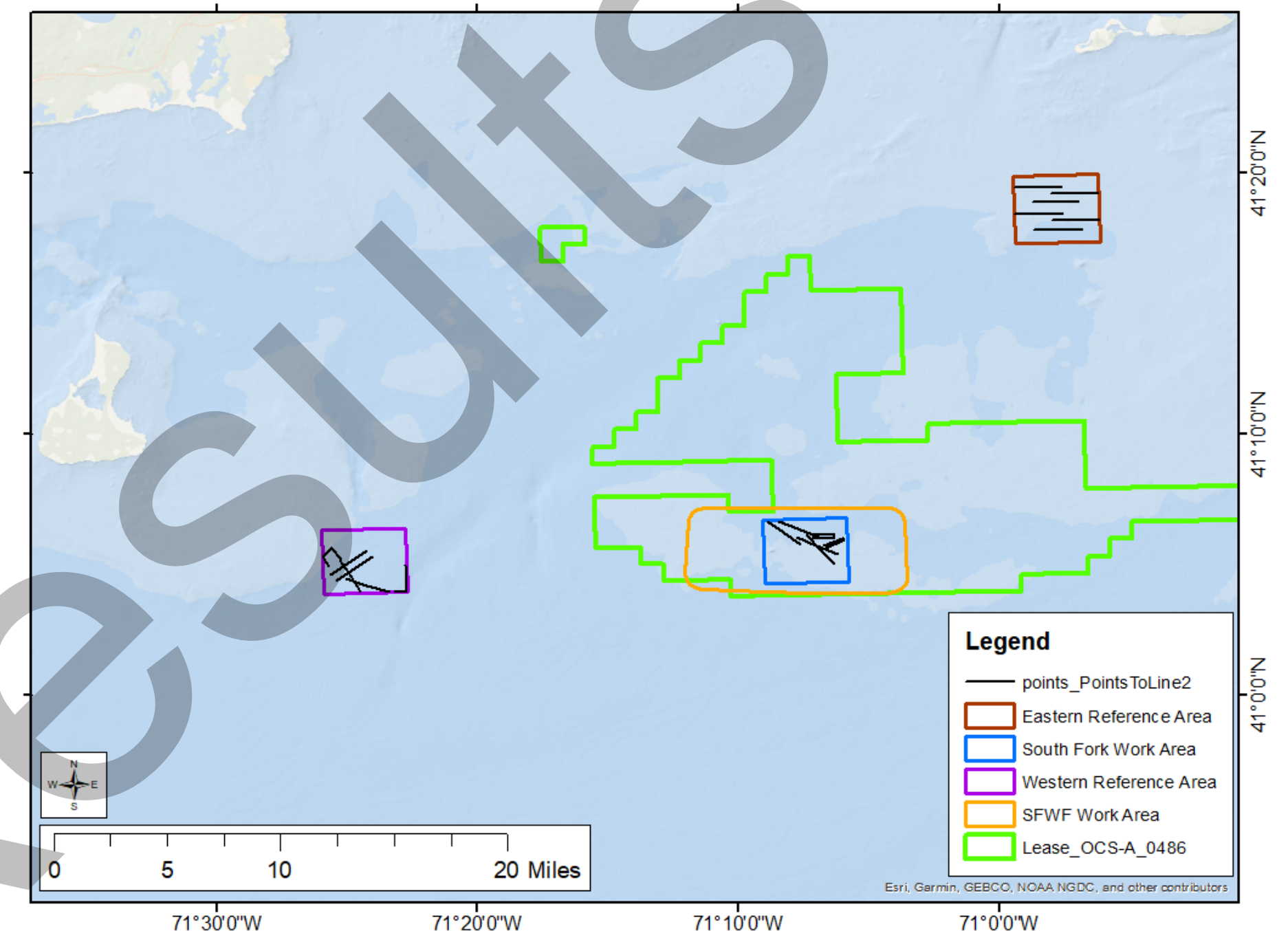


Figure 1. Western Reference Area, Eastern Reference Area, & SFWF Impact Study Area

## Preliminary Results

- At a Glance:** 17 out of 24 pre-development trips completed
- 80 species (groups) caught
  - Out of 19,960 scallops caught, only 288 (1%) were in the SFWF area

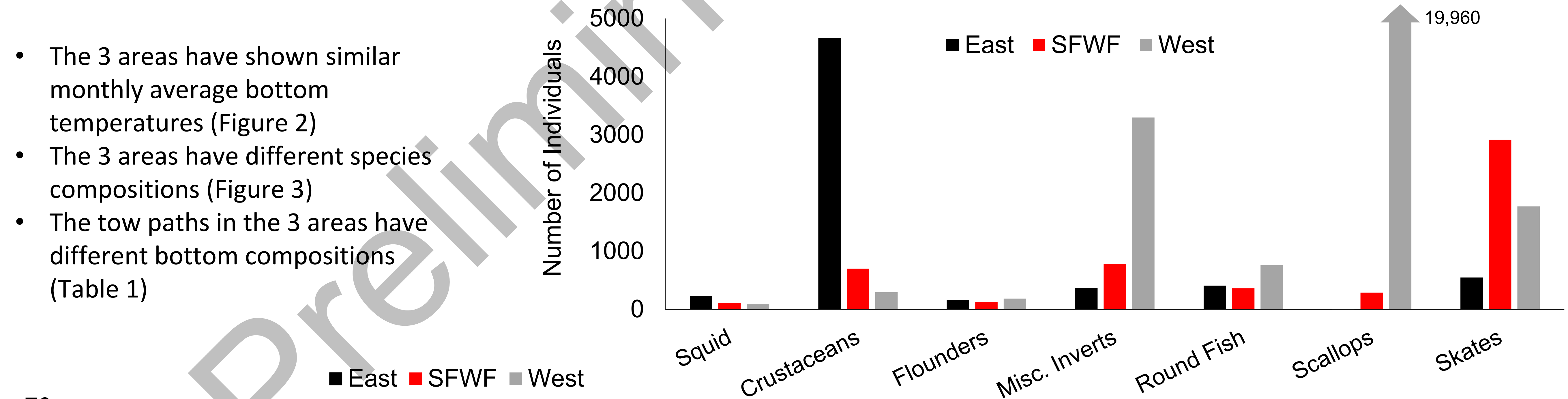


Figure 3. Number of each species group caught in each area

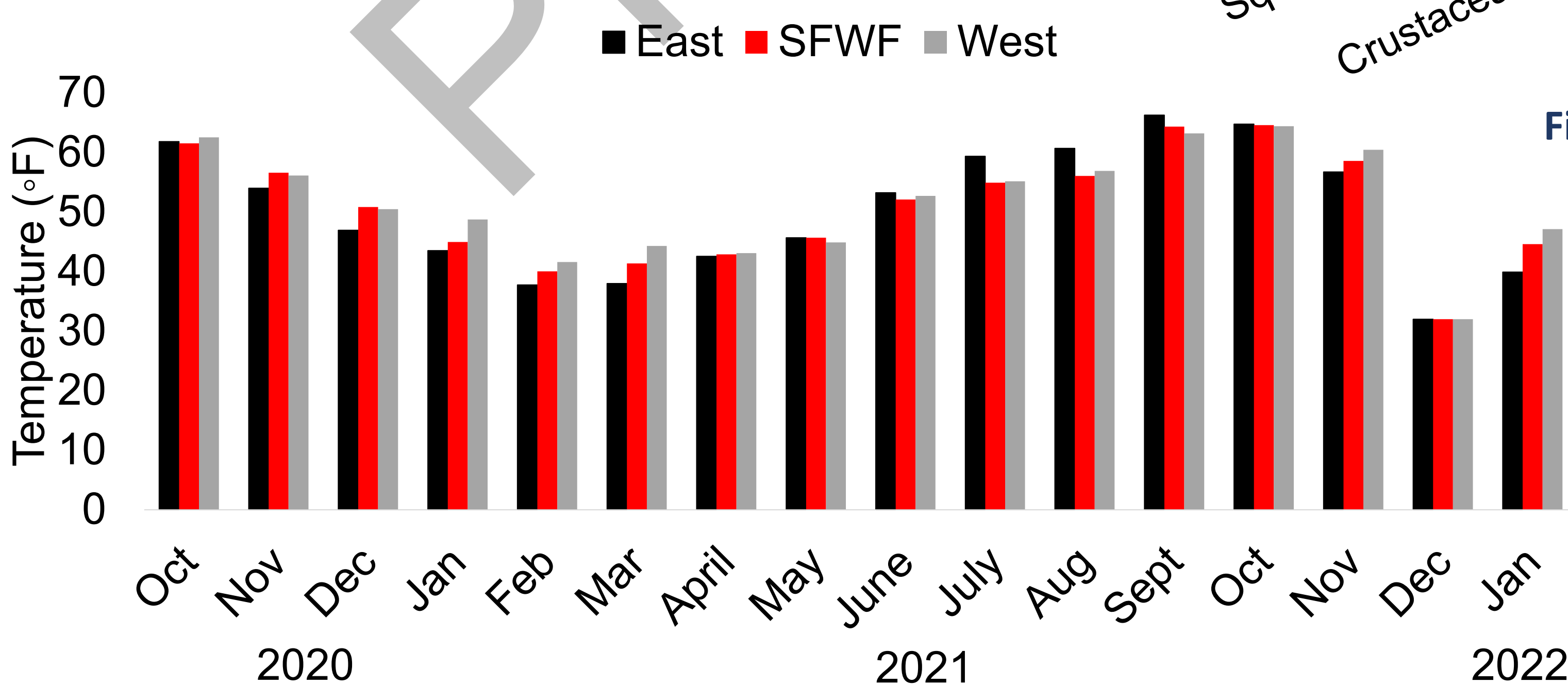


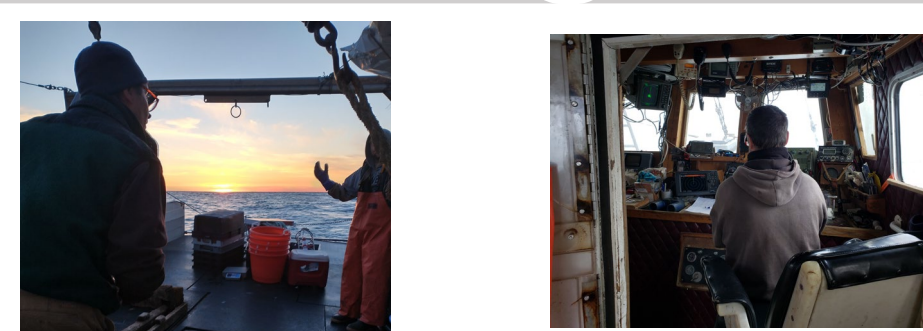
Figure 2. Monthly average bottom temperatures

Table 1. Number of rocks caught per area

Classification	East	SFWF	West
Boulder (>10 in diameter)	0	0	41
Cobble (<10 in diameter)	0	74	1399

## Acknowledgements

Thank you to Mike Marchetti, Captain of the F/V Mister G, and all crew members who have assisted with the survey!



Funding Provided By: **South Fork Wind** | Powered by Ørsted & Eversource